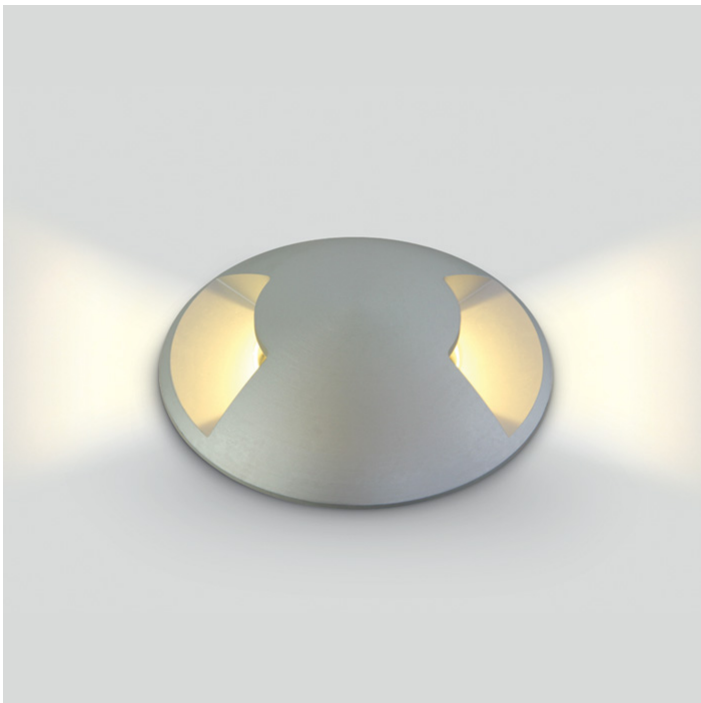


19 Wall Recessed & Inground>The Inground Medium Series LED Aluminium

69016/W



3W COB LED inground, aluminium, for path illumination., IK08, IP67.

Supplied with non-dimmable LED driver.

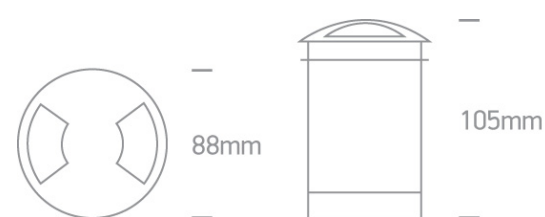
Complies with standard EN60598-1 and any other specific standards.



Downloads



Dimensions



Gallery



Physical Specification

Item Group

19 Wall Recessed & Inground

Family

The Inground Medium Series LED Aluminium

Order Code

69016/W

Colour

Aluminium

Material

Aluminium

Shape



Circular

Height


105mm

Diameter	88mm
Cutout Hole Diameter	77mm
Inground	Yes
Depth Required	105mm+300mm drainage
Indoor	Yes
Outdoor	Yes
IK Rating	8


Electrical Characteristics

Gear	Built In
Fitting + Driver	
Input Voltage	100-240V
50 Hz	Yes
60 Hz	Yes
Safety Class	
Power(Watts)	3W
IP Rating	IP67
Light Source	LED built in
Dimmable	No
Cable Length	200cm
F Mark	

Fitting	
Input Type	Constant Current
Input Current	350mA
Voltage	6V
Power(Watts)	2,8W
IP Rating	IP67
Light Source	LED built in
LED Type	SMD 1208

LED Brand	Edison
Gear	
Gear Type	Led Driver
Input Voltage	100-240V
50 Hz	Yes
60 Hz	Yes
Power(Watts)	1-4W
Power Factor	0,5
Constant Current	Yes
350mA	3-11V
IP Rating	IP20
Safety Class	
Dimmable	No
Ambient Temp	55°C
Housing Material	Plastic
Brand	Gallop

Illumination Data

Colour Temperature	3000K
Lumen Output	120lm
Light Efficiency	40lm/W
CRI	80
Illumination Diagram	

Packing Info

Box Length	18,5cm
Box Width	12,5cm
Box Height	12,5cm
Box Weight	0,790Kg

Pcs/Carton

18

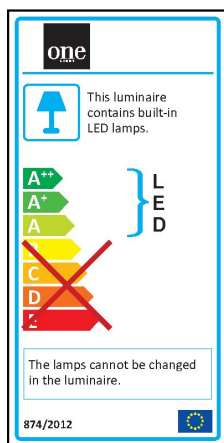
Barcode

5291889030171

HS Code

9405409900

Energy Label



Certification & Warranty

Warranty

2 Years

Average Lifetime

50000hours

Weee Directive

Yes

switch to
one light!

one
LIGHT

