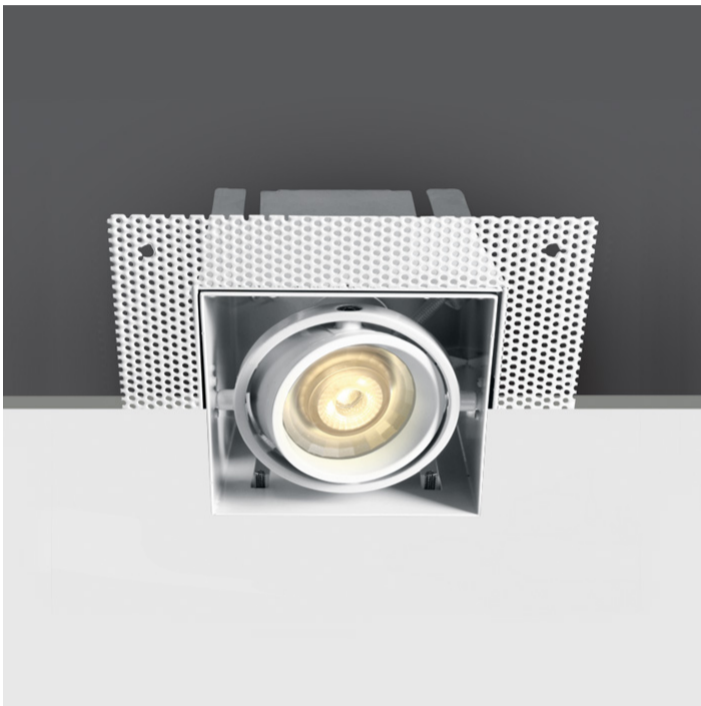


03 Recessed Spots Adjustable > The Trimless GU10 Square Range

51010TR/W



Recessed Trimless adjustable MR16 spot with GU10 lamp holder.

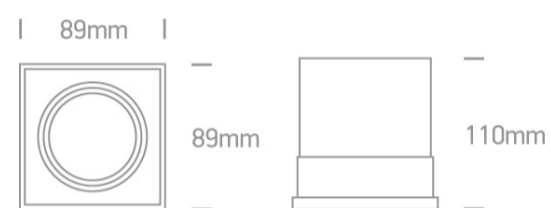
Complies with standard EN60598-1 and any other specific standards.



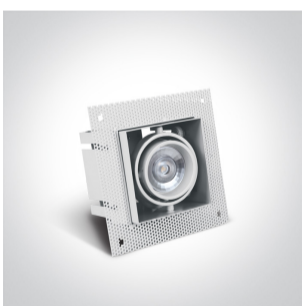
Downloads



Dimensions



Gallery





Physical Specification


Item Group	03 Recessed Spots Adjustable
Family	The Trimless GU10 Square Range
Order Code	51010TR/W
Colour	White
Material	Die Cast
Shape	Rectangular
Length	89mm

Width	89mm
Height	110mm
Cutout Hole Width	97,5mm
Cutout Hole Length	97,5mm
Recessed trimless ceiling	Yes
Depth Required	150mm
Indoor	Yes
Adjustable	2 Directions

Electrical Characteristics

Gear	No
Fitting + Driver	
Input Voltage	100-240V
50 Hz	Yes
60 Hz	Yes
Safety Class	
Power(Watts)	10W
IP Rating	IP20
Light Source	Replaceable lamp
Lamp Holder	GU10
Number of Lamps	1
Dimmable	N/A
F Mark	

Illumination Data

Illumination Diagram	
----------------------	---

Packing Info

Box Length	15cm
------------	------

Box Width	15cm
Box Height	14cm
Box Weight	0,825Kg
Pcs/Carton	16
Barcode	5291889019251
HS Code	9405409900

Certification & Warranty

Warranty	5 Years
Weee Directive	Yes

switch to
one light!

one
LIGHT

