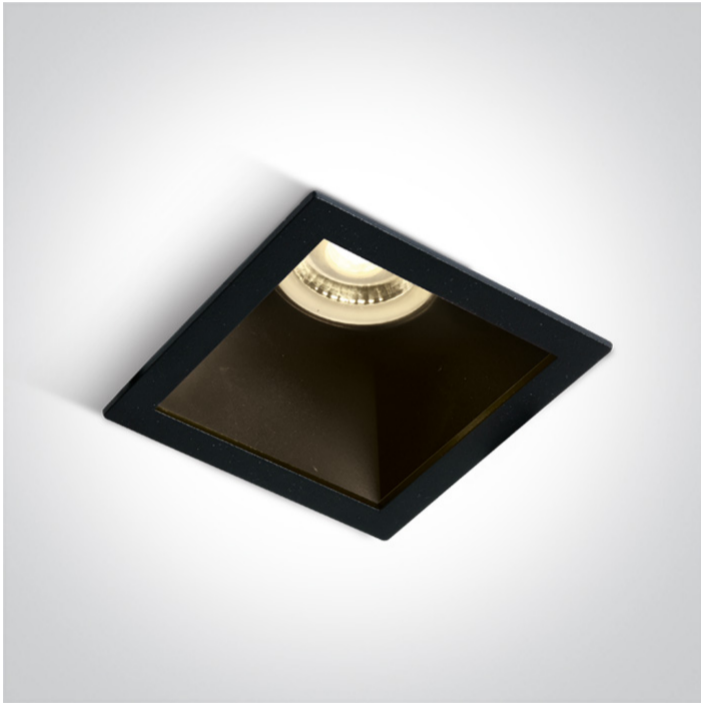


01 Recessed Spots Fixed > The Chill Out Range Square

## 50105M/B/B



Black Body Black Reflector Dark Light Recessed MR16 spot with GU10 lampholder.

Complies with standard EN60598-1 and any other specific standards.



### Downloads



### Dimensions





### Physical Specification

|                    |                            |
|--------------------|----------------------------|
| Item Group         | 01 Recessed Spots Fixed    |
| Family             | The Chill Out Range Square |
| Order Code         | 50105M/B/B                 |
| Colour             | Black                      |
| Material           | Aluminium                  |
| Shape              | Rectangular                |
| Length             | 84mm                       |
| Width              | 84mm                       |
| Height             | 45mm                       |
| Cutout Hole Width  | 76mm                       |
| Cutout Hole Length | 76mm                       |
| Recessed Ceiling   | Yes                        |

|                |       |
|----------------|-------|
| Depth Required | 130mm |
| Indoor         | Yes   |
| Adjustable     | No    |

#### Electrical Characteristics

|                  |   |
|------------------|---|
| Gear             | No  |
| Fitting + Driver |   |
| Input Voltage    | 100-240V  |
| 50 Hz            | Yes   |
| 60 Hz            | Yes   |
| Safety Class     |  |
| Power(Watts)     | 10W   |
| IP Rating        | IP20  |
| Light Source     | Replaceable lamp  |
| Lamp Holder      | GU10  |
| Number of Lamps  | 1   |
| Dimmable         | N/A   |
| Cable Length     | 15cm  |
| F Mark           |  |

#### Illumination Data

|                      |   |
|----------------------|---|
| Illumination Diagram |  |
| Dark Light           | Yes   |

#### Packing Info

|            |         |
|------------|---------|
| Box Length | 10cm    |
| Box Width  | 10cm    |
| Box Height | 10cm    |
| Box Weight | 0,183kg |

|            |               |
|------------|---------------|
| Pcs/Carton | 50            |
| Barcode    | 5291889053163 |
| HS Code    | 9405409900    |

|               |
|---------------|
| 50            |
| 5291889053163 |
| 9405409900    |

### Certification & Warranty

|                |         |
|----------------|---------|
| Warranty       | 5 Years |
| Weee Directive | Yes     |

|         |
|---------|
| 5 Years |
| Yes     |

switch to  
**one light!**

