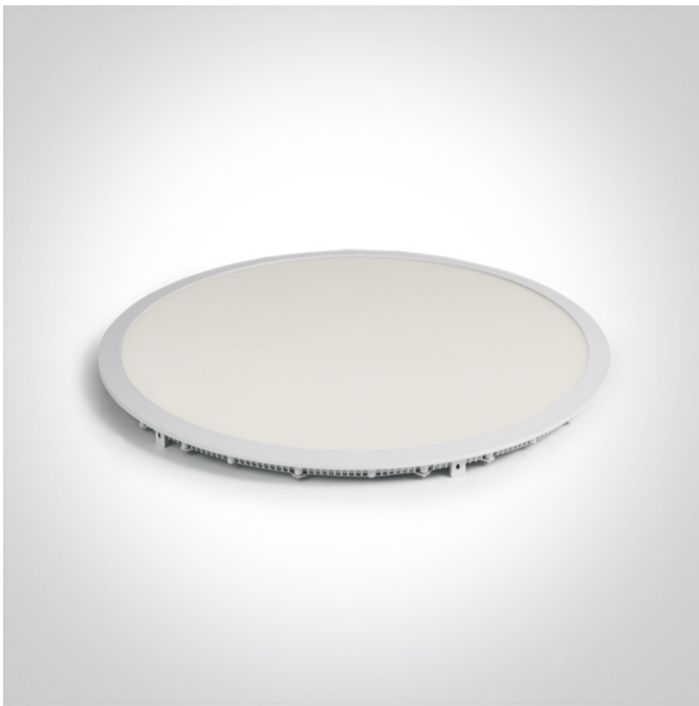


06 Downlights Fixed LED>The 40-48W Round Recessed Panels Die Cast

**10148PE/W/C**



48W slim downlight LED, IP40, ideal for commercial applications such as offices, galleries and showrooms.

Requires 1200mA LED driver.

Complies with standard EN60598-1 and any other specific standards.



#### Downloads



#### Dimensions



Must be ordered separately



89048

#### Related items



89048T



89050L



89050TLD

#### Physical Specification


Item Group

06 Downlights Fixed LED

Family	The 40-48W Round Recessed Panels Die Cast
Order Code	10148PE/W/C
Colour	White
Material	Die Cast
Diffuser Material	Acrylic
Shape	Circular
Height	20mm
Diameter	600mm
Cutout Hole Diameter	585mm
Recessed Ceiling	Yes
Depth Required	80mm
Indoor	Yes
Adjustable	No


## Electrical Characteristics

### Fitting

Input Type	Constant Current
Input Current	1200mA
Safety Class	
Power(Watts)	48W
IP Rating	IP20
Light Source	LED built in
LED Type	SMD 2835
LED Brand	Epistar
LED Number	240

## Illumination Data

Colour Temperature	4000K
Lumen Output	4000lm

Light Efficiency	83,33lm/W
CRI	80
Beam Angle	120°
Illumination Diagram	

#### Packing Info

Box Length	72cm
Box Width	65cm
Box Height	4,5cm
Box Weight	3,3Kg
Pcs/Carton	4
Barcode	5291889041870
HS Code	9405109890

#### Certification & Warranty

Warranty	2 Years
Average Lifetime	30000 hours
Weee Directive	Yes

switch to  
**one light!**

**one**  
LIGHT

