

## 02 Recessed Spots Fixed LED>The 12W COB IP65 Range

## 10112P/AL/W



12W COB LED recessed spot, IP64, for general application.

Suitable for bathroom installation.

Requires 700mA constant current driver.

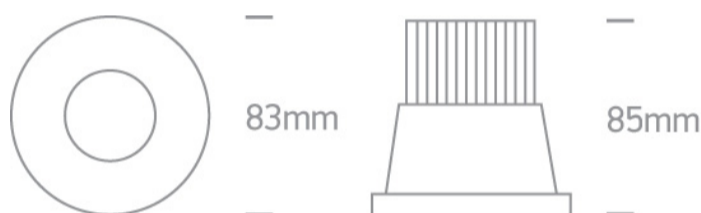
Complies with standard EN60598-1 and any other specific standards.



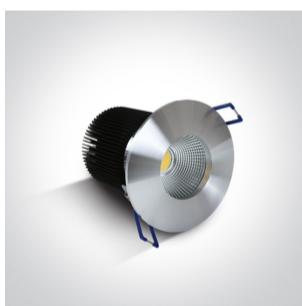
### Downloads



### Dimensions



### Gallery



### Must be ordered separately



89015A

Related items



89015AT


Physical Specification

|                      |                             |
|----------------------|-----------------------------|
| Item Group           | 02 Recessed Spots Fixed LED |
| Family               | The 12W COB IP65 Range      |
| Order Code           | 10112P/AL/W                 |
| Colour               | Aluminium                   |
| Material             | Natural Aluminium           |
| Shape                | Circular                    |
| Height               | 85mm                        |
| Diameter             | 83mm                        |
| Cutout Hole Diameter | 70mm                        |
| Recessed Ceiling     | Yes                         |
| Depth Required       | 105mm                       |
| Indoor               | Yes                         |
| Outdoor              | Yes                         |
| Adjustable           | No                          |

Electrical Characteristics


|               |                  |
|---------------|------------------|
| Fitting       |                  |
| Input Type    | Constant Current |
| Input Current | 700mA            |
| Safety Class  | III              |
| Power(Watts)  | 12W              |
| IP Rating     | IP64             |
| Light Source  | LED built in     |

|              |
|--------------|
| LED Type     |
| LED Brand    |
| Cable Length |
| F Mark       |

|   |
|---|
| COB   |
| Bridgelux   |
| 40cm  |
|  |

#### Illumination Data

|                      |
|----------------------|
| Colour Temperature   |
| Lumen Output         |
| Light Efficiency     |
| CRI                  |
| Beam Angle           |
| Illumination Diagram |
| Dark Light           |

|   |
|---|
| 3000K   |
| 1100lm  |
| 91,67lm/W   |
| 80  |
| 40°   |
|  |
| Yes   |

#### Packing Info

|            |
|------------|
| Box Length |
| Box Width  |
| Box Height |
| Box Weight |
| Pcs/Carton |
| Barcode    |
| HS Code    |

|               |
|---------------|
| 9cm           |
| 9cm           |
| 10cm          |
| 0,326kg       |
| 50            |
| 5291889038955 |
| 9405409900    |

#### Certification & Warranty

Warranty

3 Years

Weee Directive

Yes

switch to  
**one light!**

one  
LIGHT

