

NOVA LUCE

Supplier's name or trade mark: NOVA LUCE S.A
Supplier's address: SCHIMATARI VIOTIAS 32009, GREECE
Model identifier: 9600422
Type of light source: LED



Product information Sheet

General Information

Material number	9600422
Type	Bathroom Lighting
Product segment	INDOOR

Dimensions

Length (in cm)	60 Cm
Width (in cm)	12 Cm
Height (in cm)	4.2 Cm
Net Weight	380 g

Material & Colour

Enclosure Material	ABS &Acrylic
Colour	Chrome

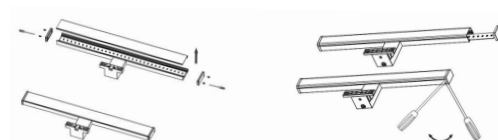
Functionality

Switch Type	-
Function	LED
Battery	No

Technical Information

Protection Degree	IP44
Protection Class	-
Mains Voltage	230V
max. Wattage	12W
Lumen	960Lm
Equivalence With Incandescent Lamp (W)	-
Colour Temperature	3000K
Nominal Lifetime (in h)	20000hrs
Switching Cycles	-
Colour Rendering Index (Ra, CRI)	CRI: 80
UGR	-
Rated Lamp Power (0,1W precision)	-
Colour Tolerance (LED, SDCM)	-

Instruction on how to remove the light source:



Product information

Lighting technology used [LED/OLED/MIXED/OTHER]	LED
Non-directional or directional [NDLS/DLS]	NDLS
Mains or non-mains [MLS/NMLS]	NMLS
Connected light source (CLS) [yes/no]	No
Colour-tuneable light source [yes/no]	No
Envelope [no/second/non-clear]	No
High luminance light source [yes/no]	Clear
Anti-glare shield [yes/no]	No
Dimmable [yes/only with specific dimmers/no]	No
Control Gear	External

General Product parameters

Energy consumption in on-mode (kWh/1000h)	11
Energy efficiency class	E
Useful luminous flux (Φ_{use}), indicating if it refers to the flux in a sphere (360°), in a wide cone (120°) or in a narrow cone (90°)	1350Lm/ sphere (360°)
Correlated colour temperature, rounded to the nearest 100 K, or the range of correlated colour temperatures, rounded to the nearest 100K, that can be set :	3000K
On-mode power (P_{on}), expressed in W [x,x]	-
Standby power (P_{sb}), expressed in W and rounded to the second decimal	-
Networked standby power (P_{net}) for CLS, expressed in W and rounded to the second decimal	-
Colour rendering index, rounded to the nearest integer , or the range of CRI values that can be set	80
Dimensions (mm) of containing product:	101x44x600
Spectral power distribution in the range 250 nm to 800 nm, at full-load	-
Claim of equivalent power (c)	-
If yes, equivalent power (W)	-
Chromaticity coordinates (x and y)	0,440,0,403

Parameters for directional light sources

Peak luminous intensity (cd)	-
Beam angle in degrees, or the range of beam angles that can be set	-

Parameters for LED and OLED light sources

R9 colour rendering index value	3
Survival factor [x,xx]	1.00
The lumen maintenance factor [x,xx]	-
Colour consistency in MacAdam ellipse steps for LED and OLED light sources	-
Colour consistency in McAdam ellipses	6
Claims that an LED light source replaces a fluorescent light source without integrated ballast of a particular Wattage	
If yes then replacement claim (W)	-
Flicker metric (Pst Lm) [x,x]	-
Pon in W	-
Beam Angle in degrees for directional light source	-
Stanby Power (Psb) in W	-
Displacement factor (cos ϕ_1) for LED and OLED mains light sources	-
Flicker metric (PstLM) for LED and OLED light sources	-



Photometric test record
9600422 - 3000k:

Lightsource Test Report

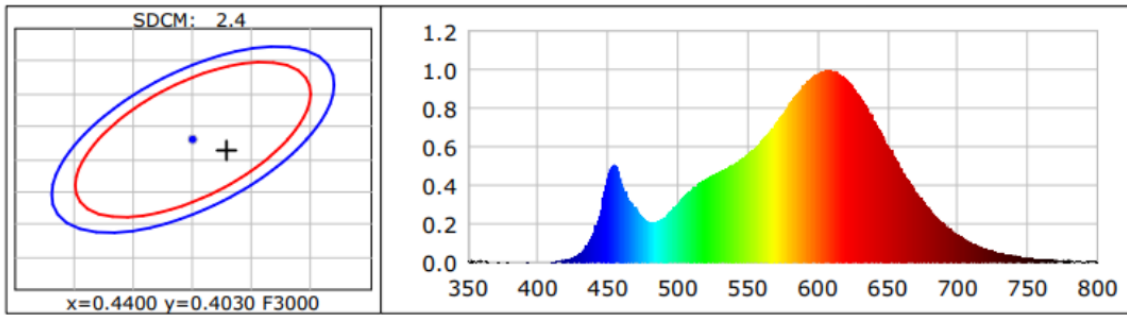
Product Information

Product Type:
Product Number: 9600422

Product Spec: 3000K
Buyer:

CIE Colorimetric Parameters

Chromaticity coordinates: $x=0.4429$ $y=0.4013$ $u(u')=0.2556$ $v=0.3475$ $v'=0.5212$
CCT: $T_c=2880K$ ($duv=-0.00184$) Color Ratio: $R=0.242$ $G=0.730$ $B=0.027$
Peak Wavelength: 608.7nm Half Bandwidth: 120.9nm
Dominant Wavelength: 603.4nm Color Purity: 0.534
Central Wave: 597.9nm Gravity Wave: 609.0nm
CRI: $R_a=84.5$ TM30: $R_f=86$, $R_g=96$
GAI: $GAI_{BB_8}=98.8$, $GAI_{BB_15}=106.4$, $GAI_{EES}=53.4$
R1 =84 R2 =94 R3 =95 R4 =83 R5 =85 R6 =94 R7 =81 R8 =61
R9 =15 R10=86 R11=83 R12=77 R13=87 R14=98 R15=77
Color Quality Scale: $Q_a=84.0$, $Q_f=85.6$, $Q_p=86.1$, $Q_g=92.4$
Q1 =80 Q2 =94 Q3 =85 Q4 =82 Q5 =85 Q6 =86 Q7 =85 Q8 =87
Q9 =95 Q10=91 Q11=88 Q12=85 Q13=84 Q14=75 Q15=76



Photometric Parameters

Luminous Flux: 1450.7 lm
EEI: 0.10

Efficiency: 135.46 lm/W Radiant Power: 4.465 W
Energy Efficiency Class: A++ (EU 874-2012)

Electric Parameters

Voltage: 64.907V
Power Factor: 1.0000

Current: 0.1650A Power: 10.71W
Frequency: 0.00Hz