

# NOVA LUCE

Supplier's name or trade mark: NOVA LUCE S.A

Supplier's address: SCHIMATARI VIOTIAS 32009, GREECE

Model identifier: 9600401

Type of light source: LED



## Product information Sheet

### General Information

Material number	9600401
Type	Bathroom Lighting
Product segment	INDOOR

### Dimensions

Length (in cm)	60 Cm
Width (in cm)	11.2 Cm
Height (in cm)	4.4 Cm
Net Weight	240 g

### Material & Colour

Enclosure Material	ABS &Acrylic
Colour	Chrome

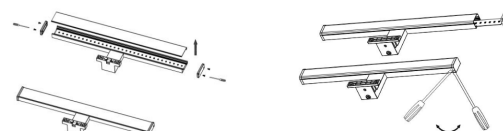
### Functionality

Switch Type	-
Function	LED
Battery	No

### Technical Information

Protection Degree	IP44
Protection Class	-
Mains Voltage	230V
max. Wattage	12W
Lumen	960Lm
Equivalence With Incandescent Lamp (W)	-
Colour Temperature	3000K
Nominal Lifetime (in h)	20000hrs
Switching Cycles	-
Colour Rendering Index (Ra, CRI)	CRI: 80
UGR	-
Rated Lamp Power (0,1W precision)	-
Colour Tolerance (LED, SDCM)	-

Instruction on how to remove the light source:



## Product information

Lighting technology used [LED/OLED/MIXED/OTHER]	LED
Non-directional or directional [NDLS/DLS]	NDLS
Mains or non-mains [MLS/NMLS]	NMLS
Connected light source (CLS) [yes/no]	No
Colour-tuneable light source [yes/no]	No
Envelope [no/second/non-clear]	No
High luminance light source [yes/no]	No
Anti-glare shield [yes/no]	No
Dimmable [yes/only with specific dimmers/no]	No
Control Gear	External

## General Product parameters

Energy consumption in on-mode (kWh/1000h)	8
Energy efficiency class	E
Useful luminous flux ( $\Phi_{use}$ ), indicating if it refers to the flux in a sphere (360°), in a wide cone (120°) or in a narrow cone (90°)	900Lm
Correlated colour temperature, rounded to the nearest 100 K, or the range of correlated colour temperatures, rounded to the nearest 100K, that can be set :	3000K
On-mode power ( $P_{on}$ ), expressed in W [x,x]	-
Standby power ( $P_{sb}$ ), expressed in W and rounded to the second decimal	-
Networked standby power ( $P_{net}$ ) for CLS, expressed in W and rounded to the second decimal	-
Colour rendering index, rounded to the nearest integer , or the range of CRI values that can be set	-
Dimensions (mm) of containing product:	101x44x400
Spectral power distribution in the range 250 nm to 800 nm, at full-load	-
Claim of equivalent power (c)	-
If yes, equivalent power (W)	-
Chromaticity coordinates (x and y)	0,440,0,403

## Parameters for directional light sources

Peak luminous intensity (cd)	-
Beam angle in degrees, or the range of beam angles that can be set	-

## Parameters for LED and OLED light sources

R9 colour rendering index value	3
Survival factor [x,xx]	1,00
The lumen maintenance factor [x,xx]	-
Colour consistency in MacAdam ellipse steps for LED and OLED light sources	-
Colour consistency in McAdam ellipses	6
Claims that an LED light source replaces a fluorescent light source without integrated ballast of a particular Wattage	
If yes then replacement claim (W)	-
Flicker metric (Pst Lm) [x,x]	-
Pon in W	-
Beam Angle in degrees for directional light source	-
Stanby Power ( $P_{sb}$ ) in W	-
Displacement factor ( $\cos \phi_1$ ) for LED and OLED mains light sources	-
Flicker metric (PstLM) for LED and OLED light sources	-



**Photometric test record**

**9600401 - 3000k:**

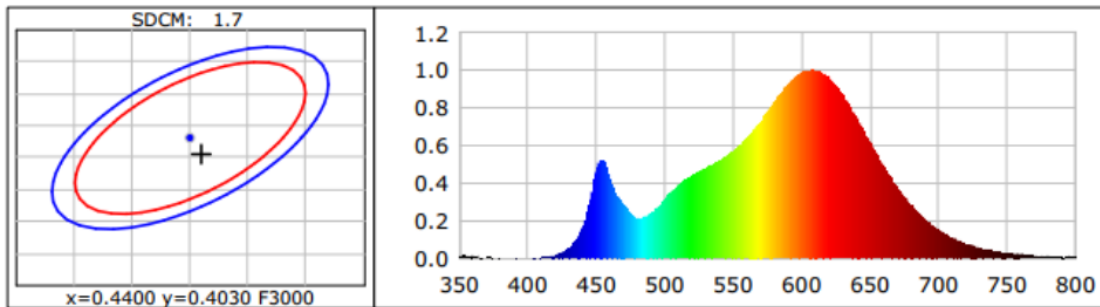
**Lightsource Test Report**

**Product Information**

Product Type: Product Spec: 3000K  
Product Number: 9600401

**CIE Colorimetric Parameters**

Chromaticity coordinates:  $x=0.4410$   $y=0.4005$   $u(u')=0.2547$   $v=0.3471$   $v'=0.5206$   
CCT:  $T_c=2904K$  ( $duv=-0.00194$ ) Color Ratio: R=0.241 G=0.731 B=0.027  
Peak Wavelength: 608.1nm Half Bandwidth: 122.5nm  
Dominant Wavelength: 583.9nm Color Purity: 0.526  
Central Wave: 597.3nm Gravity Wave: 608.0nm  
CRI: Ra= 84.7 TM30: Rf= 86, Rg= 96  
GAI: GAI\_BB\_8=99.1, GAI\_BB\_15=106.5, GAI\_EES=54.2  
R1 =84 R2 =94 R3 =95 R4 =83 R5 =85 R6 =94 R7 =81 R8 =61  
R9 =16 R10=87 R11=83 R12=77 R13=87 R14=98 R15=77  
Color Quality Scale: Qa= 84.1, Qf= 85.6, Qp= 86.3, Qg= 92.6  
Q1 =80 Q2 =94 Q3 =85 Q4 =82 Q5 =85 Q6 =86 Q7 =86 Q8 =87  
Q9 =95 Q10=91 Q11=88 Q12=85 Q13=84 Q14=75 Q15=76



**Photometric Parameters**

Luminous Flux: 970.02 lm Efficiency: 136.72 lm/W Radiant Power: 2.994 W  
EEI: 0.09 Energy Efficiency Class: A++ (EU 874-2012)

**Electric Parameters**

Voltage: 64.504V Current: 0.1100A Power: 7.09W  
Power Factor: 1.0000 Frequency: 0.00Hz