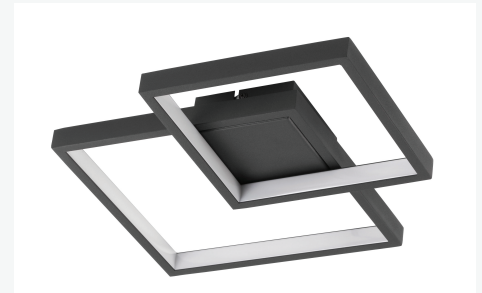


NOVA LUCE

Supplier's name or trade mark: NOVA LUCE S.A
Supplier's address: SCHIMATARI VIOTIAS 32009, GREECE
Model identifier: 9364037
Type of light source: LED



Product information Sheet

General Information

Material number	9364037
Type	Ceiling Light
Product segment	INDOOR

Dimensions

Length (in cm)	32 Cm
Width (in cm)	32 Cm
Height (in cm)	6 Cm
Net Weight	0,7 Kg

Material & Colour

Enclosure Material	Aluminium & Acrylic
Colour	Sandy Black
Adjustable	No

Functionality

Switch Type	No
Function	LED
Battery	No
USB Charger	No

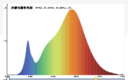
Technical Information

Protection Degree	IP20
Protection Class	II
Mains Voltage	230V
max. Wattage	19W
Lumen	1342Lm
Equivalence With Incandescent Lamp (W)	
Colour Temperature	3000K
Nominal Lifetime (in h)	30000H
Switching Cycles	-
Colour Rendering Index (Ra, CRI)	>80
Rated Lamp Power (0,1W precision)	-
Colour Tolerance (LED, SDCM)	<6

Product information

Lighting technology used [LED/OLED/MIXED/OTHER]	LED
Non-directional or directional [NDLS/DLS]	NDLS
Mains or non-mains [MLS/NMLS]	NMLS
Connected light source (CLS) [yes/no]	No
Colour-tuneable light source [yes/no]	No
Envelope [no/second/non-clear]	No
High luminance light source [yes/no]	No
Anti-glare shield [yes/no]	No
Dimmable [yes/only with specific dimmers/no]	No

General Product parameters

Energy consumption in on-mode (kWh/1000h)	21
Energy efficiency class	E
Useful luminous flux (Φ_{use}), indicating if it refers to the flux in a sphere (360°), in a wide cone (120°) or in a narrow cone (90°)	2450
Correlated colour temperature, rounded to the nearest 100 K, or the range of correlated colour temperatures, rounded to the nearest 100K, that can be set :	3000K
On-mode power (P_{on}), expressed in W [x,x]	18
Standby power (P_{sb}), expressed in W and rounded to the second decimal	
Networked standby power (P_{net}) for CLS, expressed in W and rounded to the second decimal	
Colour rendering index, rounded to the nearest integer , or the range of CRI values that can be set	80
Outer dimensions without separate control gear, lighting control parts and non-lighting control parts, if any (millimetre):	2*6*1600
Spectral power distribution in the range 250 nm to 800 nm, at full-load	
Claim of equivalent power (c)	
If yes, equivalent power (W)	
Chromaticity coordinates (x and y)	x=0.4379, y=0.4064

Parameters for directional light sources

Peak luminous intensity (cd)	
Beam angle in degrees, or the range of beam angles that can be set	

Parameters for LED and OLED light sources

R9 colour rendering index value	
Survival factor [x,xx]	
The lumen maintenance factor [x,xx]	
Displacement factor (cos ϕ_1)	
Colour consistency in McAdam ellipses	
Claims that an LED light source replaces a fluorescent light source without integrated ballast of a particular Wattage	
If yes then replacement claim (W)	
Flicker metric (Pst Lm) [x,x]	<1
Stroboscopic effect metric (SVM) [X,X]	<0.9
P_{on} in W	18

