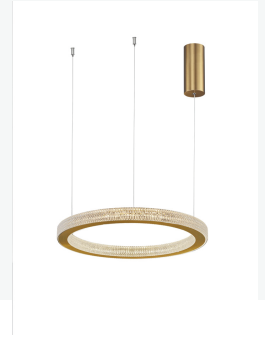


NOVA LUCE

Supplier's name or trade mark: NOVA LUCE S.A
Supplier's address: SCHIMATARI VIOTIAS 32009, GREECE
Model identifier: 9285410
Type of light source: LED



Product information Sheet

General Information

Material number	9285410
Type	Pendant lamp
Product segment	INDOOR

Dimensions

Diameter (in cm)	40Cm
Width (in cm)	
Height (in cm)	120Cm
Net Weight	2.2 Kg

Material & Colour

Enclosure Material	Iron & aluminum & acrylic
Colour	Gold
Adjustable	Dimmable

Functionality

Switch Type	No
Function	LED
Battery	No
USB Charger	No

Technical Information

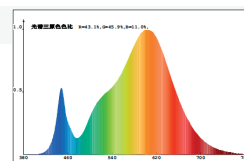
Protection Degree	IP20
Protection Class	I
Mains Voltage	230V
max. Wattage	30W
Lumen	1828lm
Equivalence With Incandescent Lamp (W)	
Colour Temperature	3000K
Nominal Lifetime (in h)	30000H
Switching Cycles	-
Colour Rendering Index (Ra, CRI)	CRI >80
Rated Lamp Power (0,1W precision)	<6
Colour Tolerance (LED, SDCM)	

Product information

Lighting technology used [LED/OLED/MIXED/OTHER]	LED
Non-directional or directional [NDLS/DLS]	NDLS
Mains or non-mains [MLS/NMLS]	NMLS
Connected light source (CLS) [yes/no]	No
Colour-tuneable light source [yes/no]	No
Envelope [no/second/non-clear]	No
High luminance light source [yes/no]	No
Anti-glare shield [yes/no]	No
Dimmable [yes/only with specific dimmers/no]	Yes

General Product parameters

Energy consumption in on-mode (kWh/1000h)	30
Energy efficiency class	E
Useful luminous flux (Φ_{use}), indicating if it refers to the flux in a sphere (360°), in a wide cone (120°) or in a narrow cone (90°)	2340
Correlated colour temperature, rounded to the nearest 100 K, or the range of correlated colour temperatures, rounded to the nearest 100K, that can be set :	3500K
On-mode power (P_{on}), expressed in W [x,x]	35
Standby power (P_{sb}), expressed in W and rounded to the second decimal	
Networked standby power (P_{net}) for CLS, expressed in W and rounded to the second decimal	
Colour rendering index, rounded to the nearest integer , or the range of CRI values that can be set	>80
Outer dimensions without separate control gear, lighting control parts and non-lighting control parts, if any (millimetre):	
Spectral power distribution in the range 250 nm to 800 nm, at full-load	



Claim of equivalent power (c)	
If yes, equivalent power (W)	
Chromaticity coordinates (x and y)	"x=0.4421 y=0.4061"

Parameters for directional light sources

Peak luminous intensity (cd)	
Beam angle in degrees, or the range of beam angles that can be set	
Beam Angle in degrees for directional light source	120

Parameters for LED and OLED light sources

R9 colour rendering index value	
Survival factor [x,xx]	
The lumen maintenance factor [x,xx]	
Displacement factor (cos ϕ_1)	
Colour consistency in McAdam ellipses	
Claims that an LED light source replaces a fluorescent light source without integrated ballast of a particular Wattage If yes then replacement claim (W)	
Flicker metric (Pst Lm) [x,x]	No
Stroboscopic effect metric (SVM) [X,X]	<0.9
Pon in W	40

