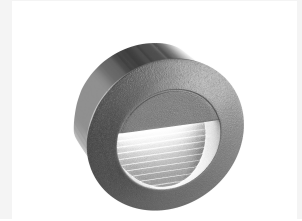


NOVA LUCE

Supplier's name or trade mark: NOVA LUCE S.A
Supplier's address: SCHIMATARI VIOTIAS 32009, GREECE
Model identifier: 726407
Type of light source: LED



Product information Sheet

General Information

Material number	726407
Type	Step Light
Product segment	OUTDOOR

Dimensions

Diameter (in cm)	8 Cm
Width (in cm)	5.5 Cm
Height (in cm)	
Net Weight	

Material & Colour

Enclosure Material	Aluminium
Colour	Dark Gray

Functionality

Switch Type	No
Function	LED
Battery	No

Technical Information

Protection Degree	IP54
Protection Class	I
Mains Voltage	230V
max. Wattage	3W
Lumen	270Lm
Equivalence With Incandescent Lamp (W)	-
Colour Temperature	3000K
Nominal Lifetime (in h)	20000H
Switching Cycles	15000
Colour Rendering Index (Ra, CRI)	80CRI
UGR	-
Rated Lamp Power (0,1W precision)	-
Colour Tolerance (LED, SDCM)	-

Product information

Lighting technology used [LED/OLED/MIXED/OTHER]	LED
Non-directional or directional [NDLS/DLS]	NDLS
Mains or non-mains [MLS/NMLS]	NMLS
Connected light source (CLS) [yes/no]	Yes
Colour-tuneable light source [yes/no]	No
Envelope [no/second/non-clear]	No
High luminance light source [yes/no]	No
Anti-glare shield [yes/no]	No
Dimmable [yes/only with specific dimmers/no]	No

General Product parameters

Energy consumption in on-mode (kWh/1000h)	
Energy efficiency class	F
Useful luminous flux (Φ_{use}), indicating if it refers to the flux in a sphere (360°), in a wide cone (120°) or in a narrow cone (90°)	-
Correlated colour temperature, rounded to the nearest 100 K, or the range of correlated colour temperatures, rounded to the nearest 100K, that can be set :	3000K
On-mode power (P_{on}), expressed in W [x,x]	-
Standby power (P_{sb}), expressed in W and rounded to the second decimal	No
Networked standby power (P_{net}) for CLS, expressed in W and rounded to the second decimal	-
Colour rendering index, rounded to the nearest integer , or the range of CRI values that can be set	-
Outer dimensions without separate control gear, lighting control parts and non-lighting control parts, if any Height/Width /Depth:	-
Spectral power distribution in the range 250 nm to 800 nm, at full-load	-
Claim of equivalent power (c)	-
If yes, equivalent power (W)	-
Chromaticity coordinates (x and y)	-

Parameters for directional light sources

Peak luminous intensity (cd)	
Beam angle in degrees, or the range of beam angles that can be set	27°

Parameters for LED and OLED light sources

R9 colour rendering index value	-
Survival factor [x,xx]	3/1000
The lumen maintenance factor [x,xx]	10%-15% 30000h
Displacement factor ($\cos \phi 1$)	≥ 0.5
Colour consistency in McAdam ellipses	
Claims that an LED light source replaces a fluorescent light source without integrated ballast of a particular Wattage If yes then replacement claim (W)	
Flicker metric (Pst Lm) [x,x]	<2%
Stroboscopic effect metric (SVM) [X,X]	<0.3
Beam Angle in degrees for directional light source	
Stanby Power (P_{sb}) in W	No
Displacement factor ($\cos \phi 1$) for LED and OLED mains light sources	≥ 0.5
Flicker metric (PstLM) for LED and OLED light sources	<2%

